

# Online 3D SPI AIS630B

Application behind solder printer

- ✓ High-precision 3D imaging
- ✓ Simple and efficient programming
- ✓ Data visual manage



## CORE TECHNOLOGY

### Multi-directional structured light imaging technology

Minimize shadow problems, truly restore defects, improve inspection accuracy, reduce false positive rate

### Minimalist programming

Intelligent identify of solder area, support method, no GERBER programming

### High-precision phase height mapping calibration algorithm

Sine grating projection, multiple sampling at different phases, enhance data reliability and ensure measurement accuracy

### Dynamic adaptive datum algorithm

Little imaging distortion with telecentric lens, dynamic adaptive reference plane, static compensation to solve bending of FPC

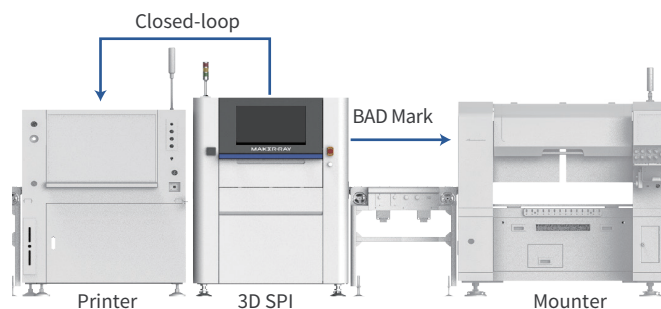
### High-speed camera, high-resolution projection

Adopt 180FPS high-speed camera, 1080P high-resolution projection, improve inspection speed and accuracy

### RGBR four-channel light source

Help to enhance the positioning accuracy of MARK point and restore image. Combined with DL algorithm, inspection accuracy is improved by avoiding the interference of silk screen

## Special features



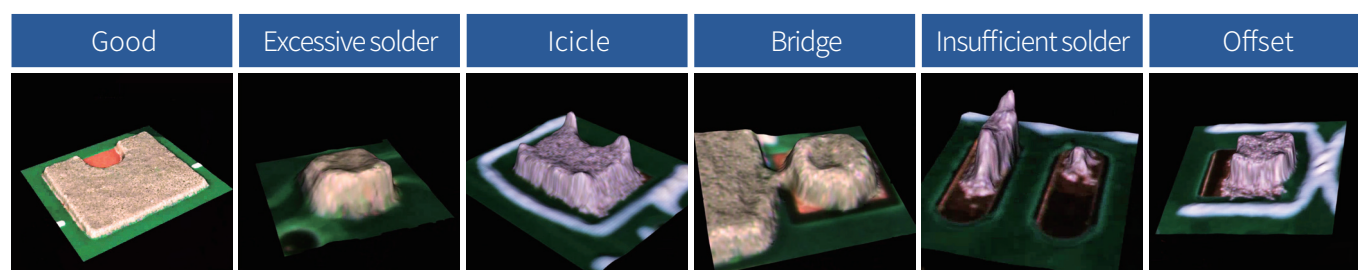
Red glue inspection

NG board  
information sharingClosed-loop control  
of printer

3-location combination

SPC data analysis

## Detectable defects



## Specifications

Category	Item	AIS630B
PCBA	Size	50*50mm~510*460mm (Large board mode: Max770*460mm)
	Thickness	0.5mm-6mm
	Height of elements	Top:25mm, Bottom: 50mm
	Processing edge	3mm
Optical specification	Camera	4MP, color
	Light source	RGB + W light source+ 1 projector
	Resolution & FOV	15um@30*30mm
Inspection-related	Solder	Insufficient,Excessive,Bridge, Height,Icicle,shape,Solder void,etc.
	Other function	Bar code Recognition / QR code Recognition/ OCR
	Mixing boards inspection	Yes,Support calling program automatically
	Algorithm	CNN, color contrast, outline recognition, image contrast,etc.
	Speed	0.33sec/FOV
Software	Operating system	Ubuntu 18.04 LTS 64bit
	Function	Remote control, remote assistance,Gerbe file import and user-defined model training
	Communication method	Standard SMEMA interface
	Data output	Autogenerated statistic analysis SPC
	Special function	Automatic search of pad and quick programming
Hardware	PC	CPU: intel i7 Display card: Gigabyte RTX2060 8G display Memory: 64G DDR, 240G SSD+2T Mechanical Hard Disk Network: 1000M Wired Network Card
	Display	23.8 inch FHD display
Appearance /electric	Dimention and weight	(L*H*W) 1114*1595*1280, net weight:765Kg
	Power and air supply	AC 220V, rated power 570W, 0.4-0.6Mpa
	Work environment	Temperature: 10~45°C, Humidity: 30~85%RH

\*Specifications are subject to change without notice.